



NEWSTRIKE
CAPITAL INC.

GOLD AND SILVER EXPLORATION
IN MEXICO

Precious Metals Summit Colorado
September 5-7, 2012

TSX-V: NES



FORWARD LOOKING STATEMENTS

Certain statements in this presentation constitute forward-looking statements and as such are based on an assumed set of economic conditions and courses of action. These include estimates of future production levels, expected trends in mineral prices and statements that describe company plans, objectives or goals. There is a significant risk that actual results will vary, perhaps materially, from results projected depending on such factors as changes in general economic conditions and financial markets, changes in prices for gold and other metals, technological and operational hazards in the companies mining and mine development activities, risks inherent in mineral exploration, uncertainties inherent in the calculation of mineral reserves, mineral resources, and metal recoveries, the timing and availability of financing, governmental and other approvals, political unrest or instability in countries where the company is active, labour relations and other risk factors.

The securities of the Company have not been and will not be registered under the United States Securities Act of 1933 (the "US Securities Act"), as amended, or the securities laws of any state and may not be offered or sold in the United States or to US persons (as defined in Regulation S of the US Securities Act) unless an exemption from registration is available.

WWW.NEWSTRIKECAPITAL.COM



MEXICO – A GOOD PLACE TO BE





MANAGEMENT

Management and directors co-discovered Goldcorp's & Torex Gold's significant discoveries in Guerrero, currently in advanced stages of exploration and production. These include: The 'Los Filos Project' and the 'Morelos Project.'

Management & Operations - Vancouver

- Richard O'C. Whittall – Director, President and CEO
- Gillian Kearvell - Vice President Exploration
- Salvador Miranda - Chief Financial Officer
- Ash Abhyankar – Vice President, Finance
- Thomas Bagan –Vice President of Project Development

Management & Operations - Mexico

- Dr. David E. Euresti-Reyna - President
- Dr. Craig Gibson - Operations Consultant

Directors

- Ken Thorsen
- Dr. Wojtek Wodzicki
- Robert K. Withers
- Kevin Rathbun
- George Brack

Advisory Board

- John Morganti

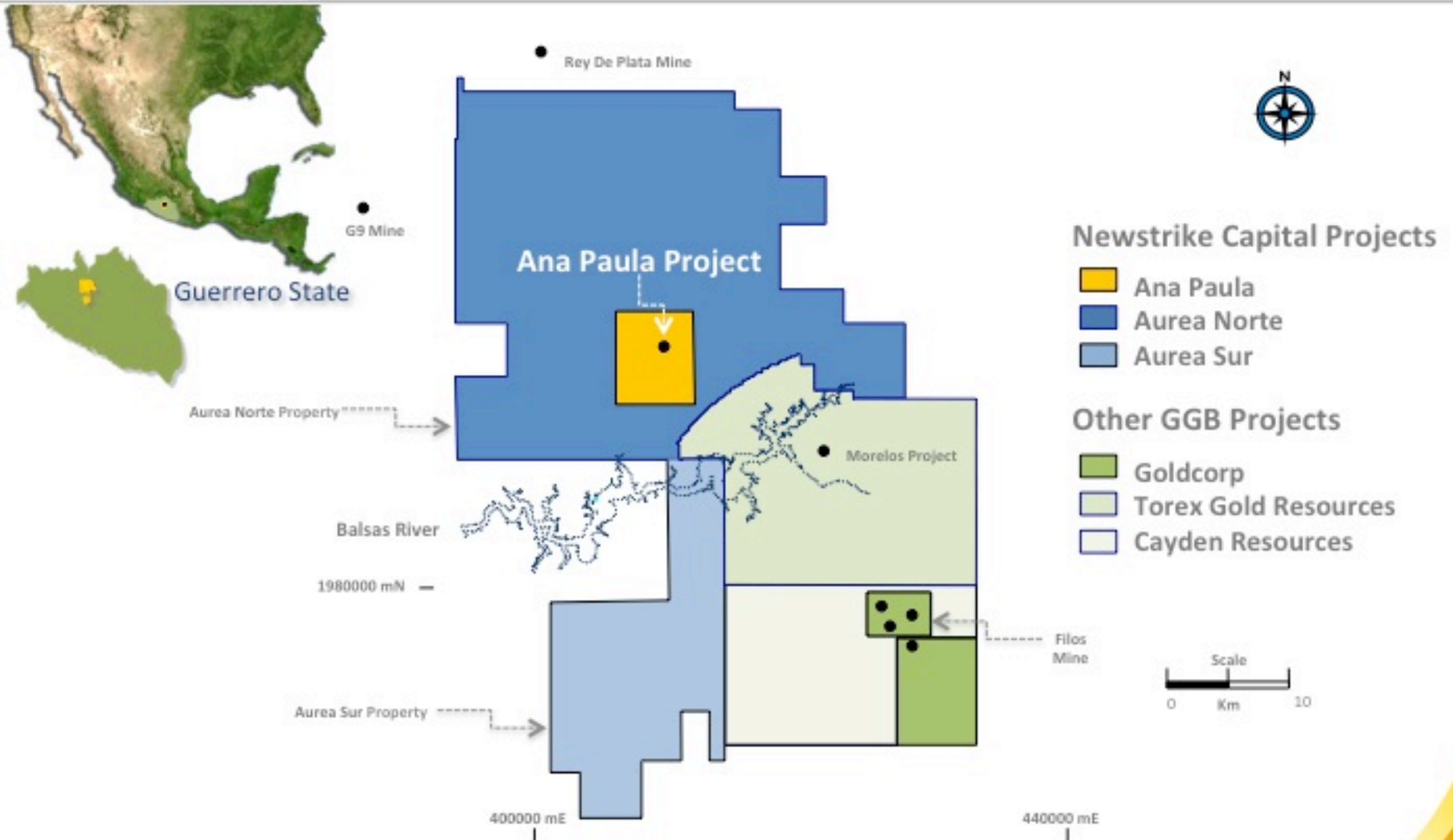


NES – (TSX.V) SHARE STRUCTURE

Common issued and outstanding	114,931,458
Stock Options	5,635,000
Warrants	0
Fully diluted	120,566,458
Cash on Hand	\$34,000,000



THE GGB NEIGHBOURHOOD



A 100% Owned GGB Land Position – 88,952 Hectares



THE GGB – A PROVEN EXPLORATION MODEL



✓ Los Filos = 13.6 Moz gold,
95.8 Moz silver

✓ Torex Gold = 5.4 Moz gold,
9.8 Moz silver

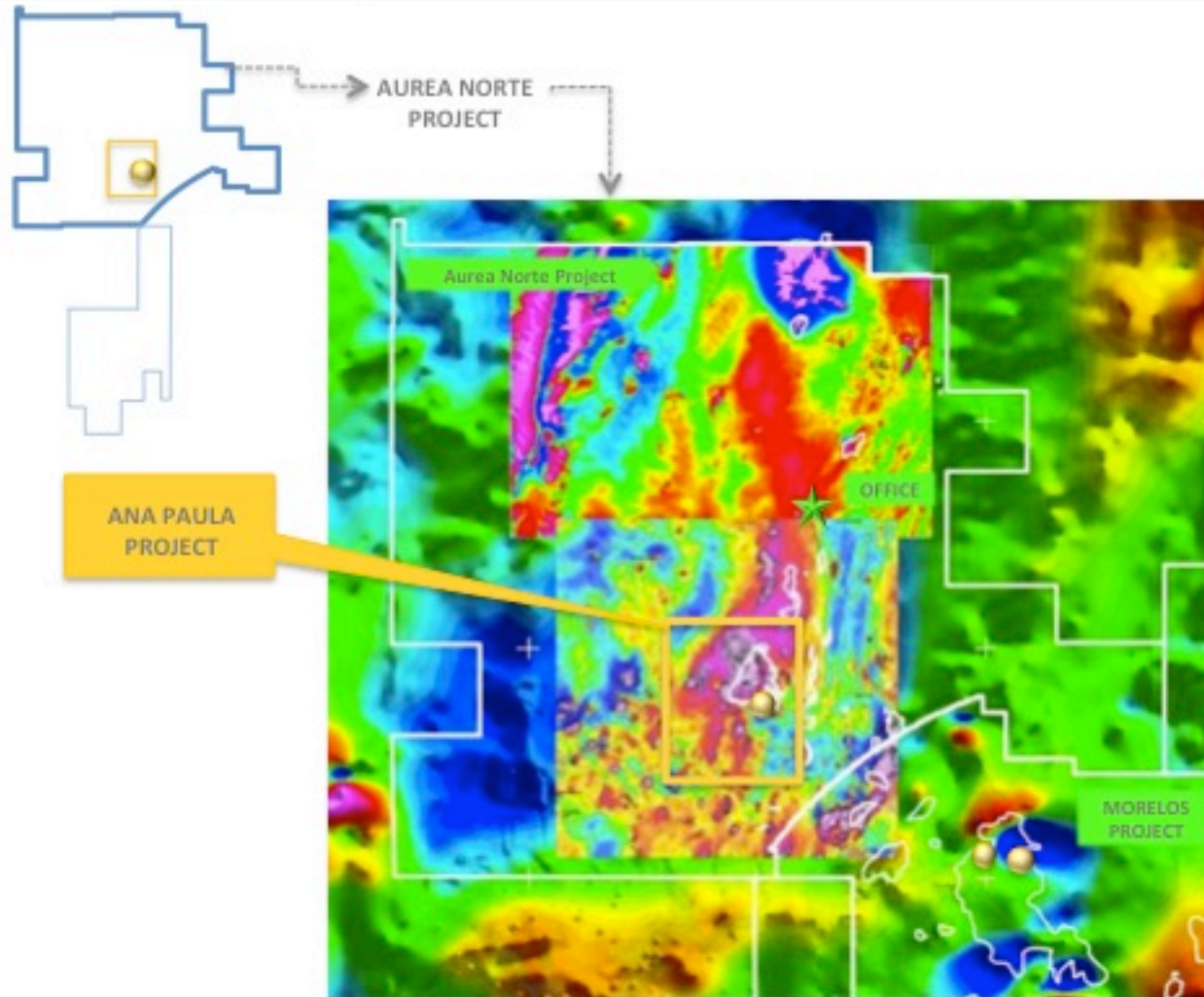
- A common origin in a 62 to 66 MY intrusive event
- Au (Cu, Ag) Skarn-Porphyry System
- Associated intrusions outcrop at surface along a 55 Km trend of magnetic anomalies
- Gold deposits occur in clusters around these intrusions
- Each GGB deposit contains multi-million ounces in all categories
- Over 19 Million Oz Au to date

Newstrike is focused on Ana Paula, a significant new GGB discovery



THE EXPLORATION PIPELINE

AIRBORNE MAGNETIC SURVEY RESULTS - COMPELLING EXPLORATION POTENTIAL



2012 EXPLORATION PLANS

- ✓ CAD \$15MBudget for 2012
- ✓ Infrastructure and Surface access
- ✓ Detail and regional mapping and sampling
- ✓ 45,000 meters of drilling
 - Breccia delineation
 - Infill and step out drilling
- ✓ Geologic modeling
- ✓ Engineering Studies
- ✓ Environmental and Permitting

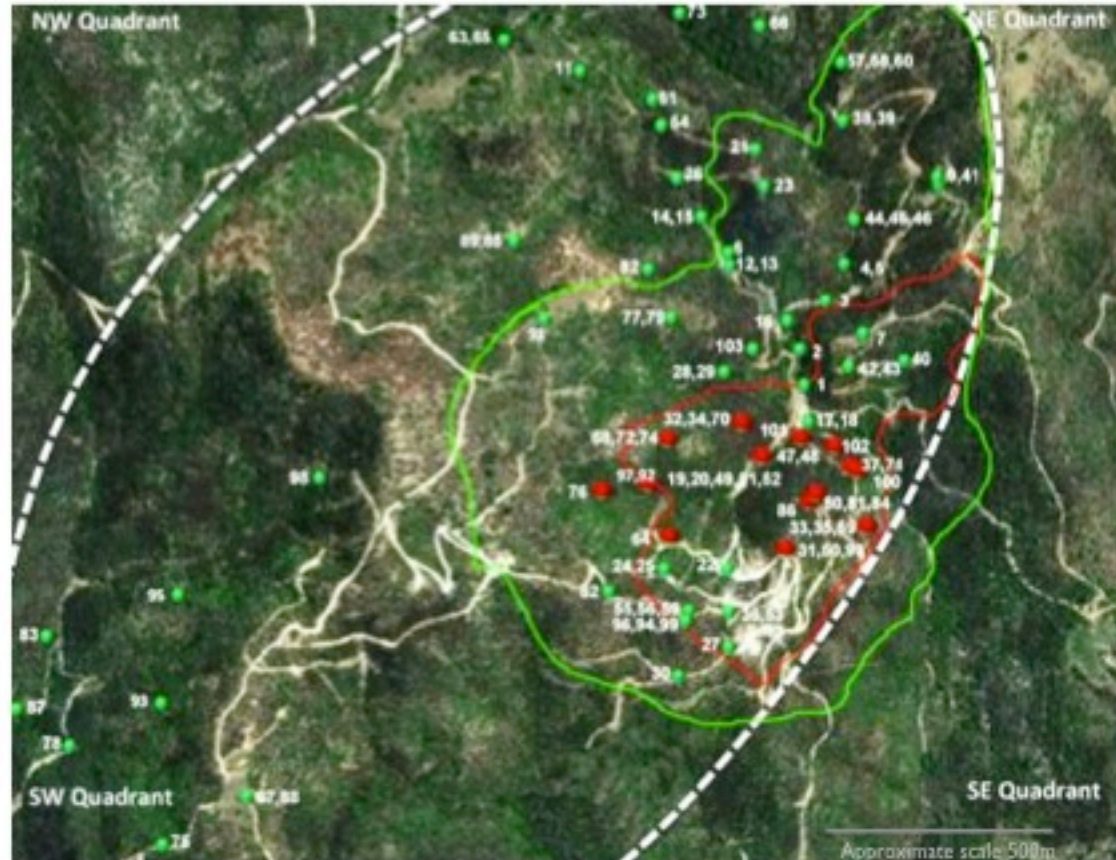
A RTP Magnetic Composite Map: Overlay of two high resolution surveys on a low resolution regional base map. Outline of GGB intrusions in white.



ANA PAULA

A robust gold-silver mineralizing system - A 1 by 2 Km Exploration Target

Drill Hole Location Plan with Idealized Pit Outlines



Exploration Progress

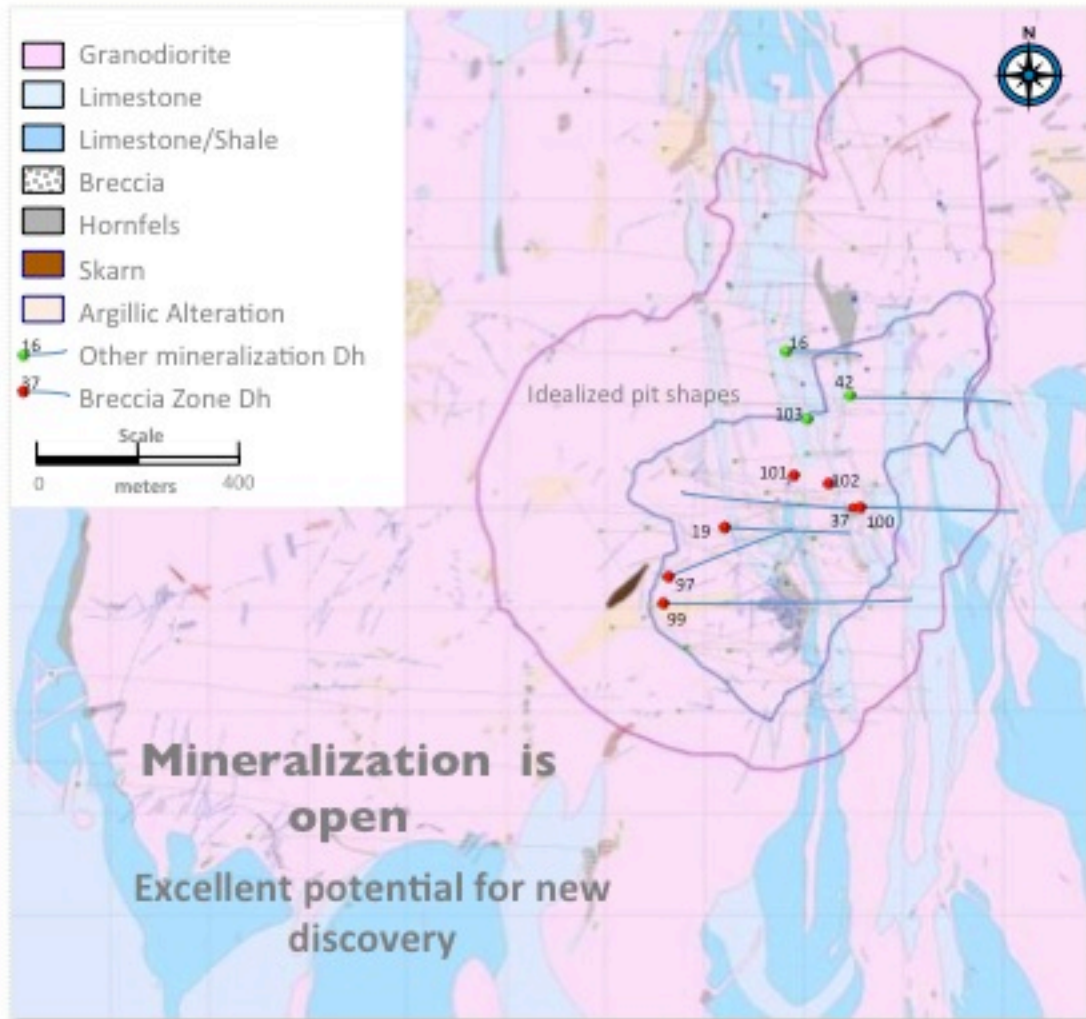
- Significant Bulk Tonnage Potential
 - High Grade Breccia Zone
 - A Lower Grade Gold Corridor
- 55,000 meters drilled to date
 - 24,000 meters in the 2012
 - 4 Rigs turning
- Over 46,000 samples collected
- Mapping Advances
- Permitting and Infrastructure Advances
- Engineering Advances
- Team Building Continues

104 of 108 Drill Holes have Intersected Significant Mineralization



ANA PAULA

FOCUSED ON ADVANCING TO A MAIDEN RESOURCE



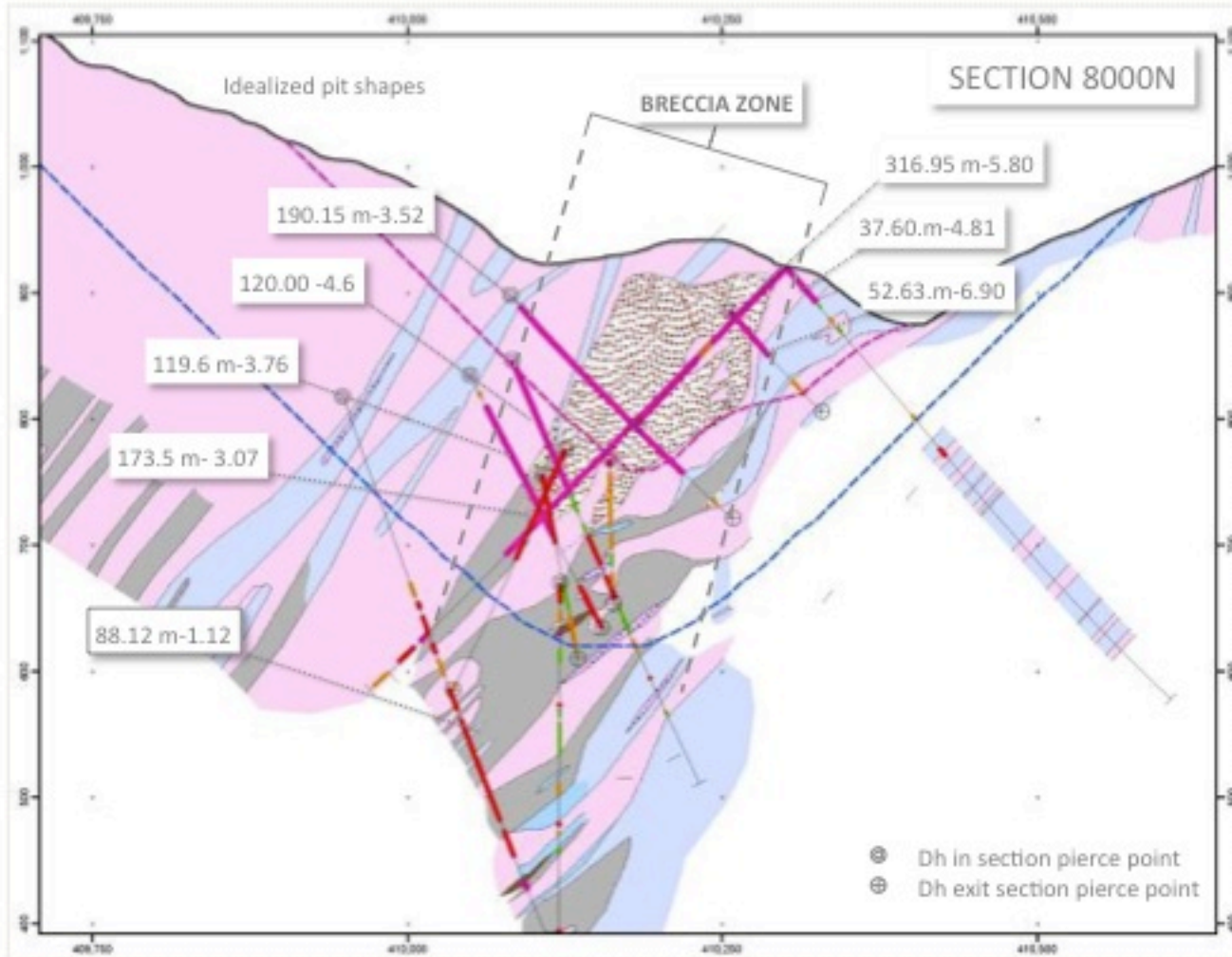
Select Drill Assay Results

Drillhole	Length (m)	Au g/t	Ag g/t
AP-16	23.13	4.06	6.1
	10.00	0.67	2.2
AP-19	214.00	3.00	5.5
AP-37	316.95	5.80	5.6
AP-42	53.96	0.89	6.4
AP-97	7.45	2.64	4.3
	12.34	32.11	3.6
	26.00	1.24	2.7
AP-100	37.60	4.81	6.35
AP-101	103.11	5.06	3.59
	17.09	1.34	2.12
	26.08	3.83	8.11
	8.23	3.22	9.9
AP-102	48.50	2.48	4.6
	20.70	3.14	5.7
	12.18	0.80	1.4
AP-103	3.60	0.50	9.75
	4.86	0.54	8.15
	7.83	0.42	1.35



THE HIGH GRADE BRECCIA ZONE

SOUTHEAST QUADRANT



81.5m - 2.19 = interval- Au g/t

LEGEND

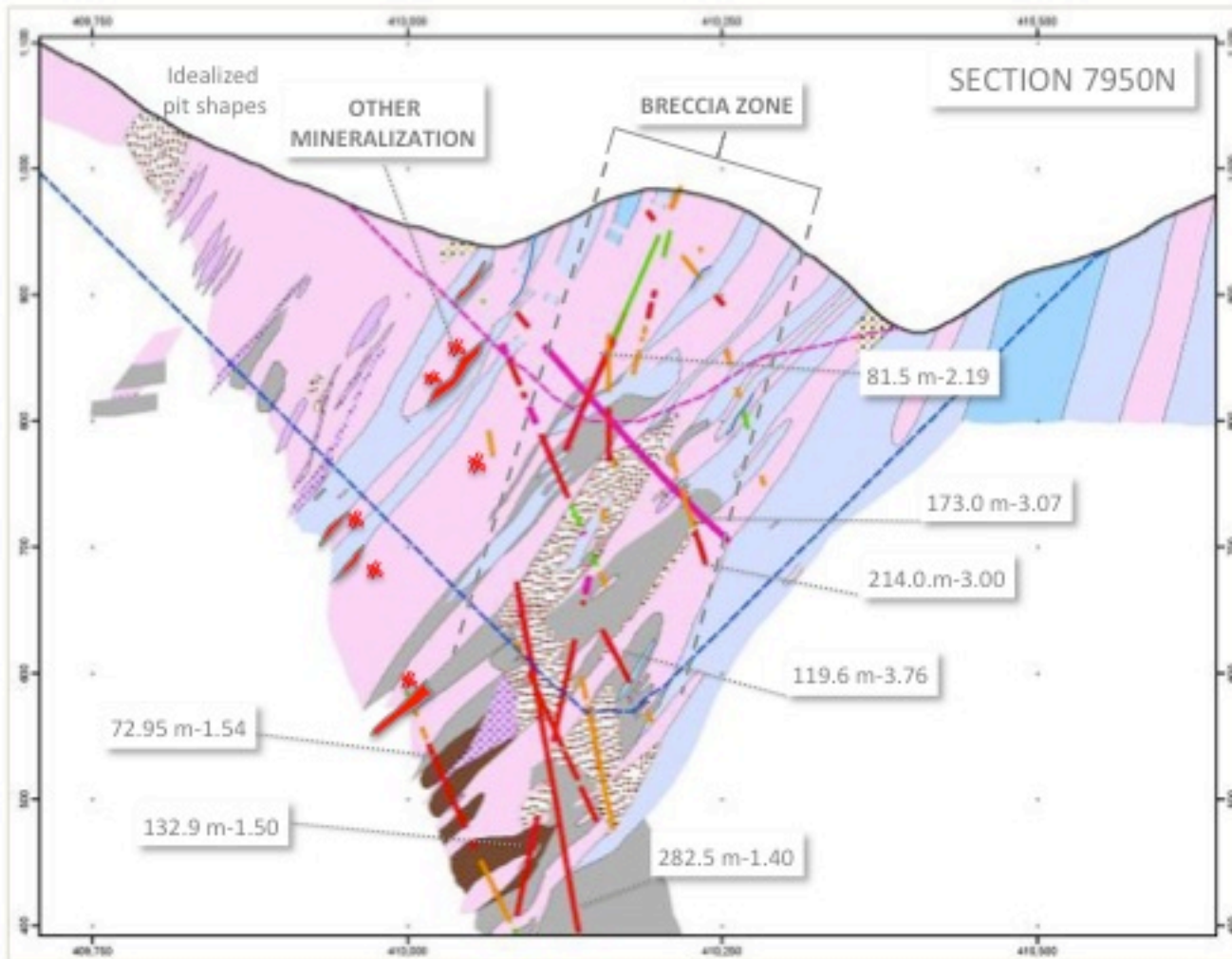
- Granodiorite
- Limestone
- Limestone/Shale
- Breccia
- Hornfels
- Skarn

- Drill Hole Gold Intersects
- >3 g/t Au
- 1-3 g/t Au
- 0.5-1 g/t Au
- 0.2-0.5 g/t Au



BULK TONNAGE POTENTIAL

SOUTHEAST QUADRANT



81.5m - 2.19 = interval- Au g/t

- ✓ Multiple depositional sites for gold mineralization
- ✓ Bulk Tonnage Potential includes:
 - High Grade Breccia Zone
 - A N-S Corridor of Stratabound Mineralization

- Granodiorite
- Limestone
- Limestone/Shale
- Breccia
- Hornfels
- Skarn

Drill Hole Gold Intersects

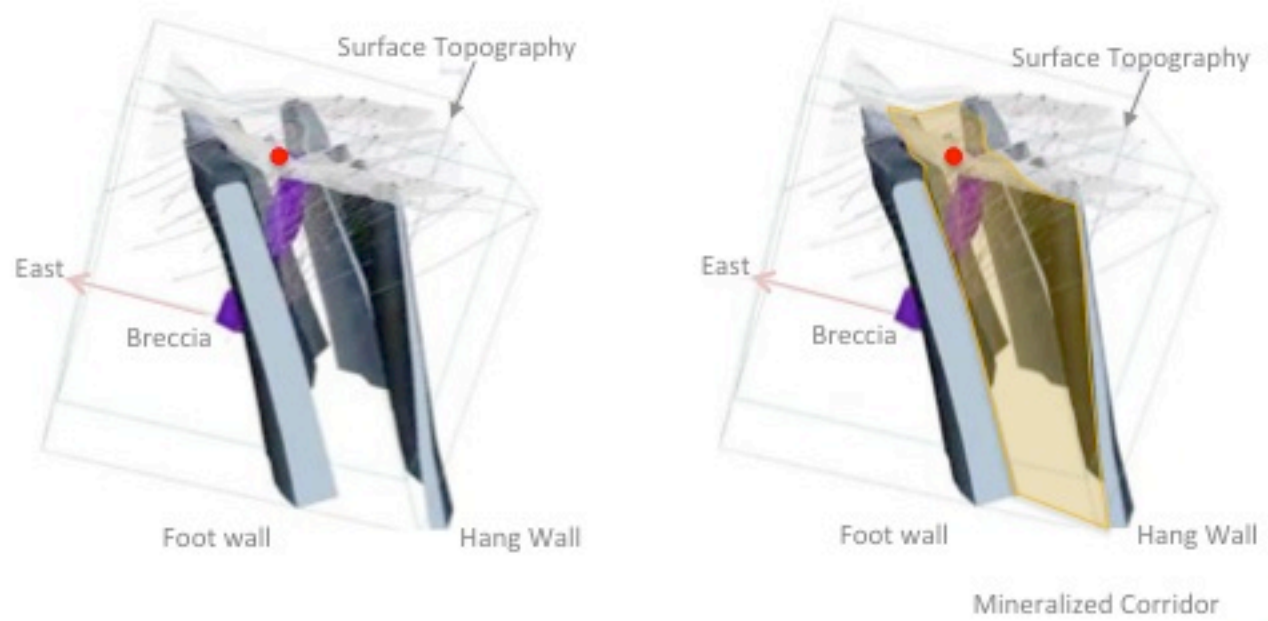
- >3 g/t Au
- 1-3 g/t Au
- 0.5-1 g/t Au
- 0.2-0.5 g/t Au



A PRELIMINARY MODEL OF THE BRECCIA



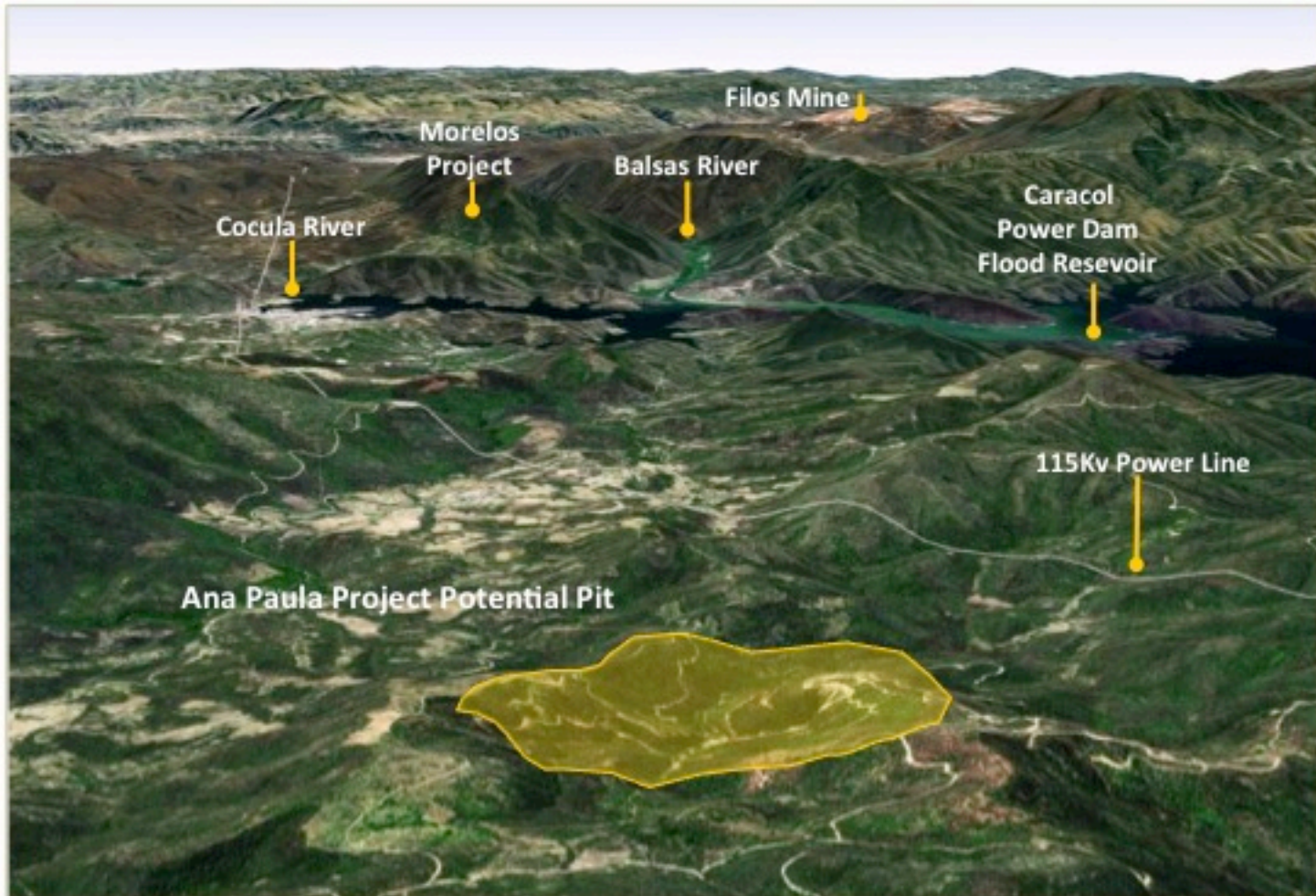
- AP-19 location
- High grade Breccia Core
- Footwall-Hangwall solids
- Au Mineralized Corridor
- Drill Hole Trace
- AP-37 Drill Hole Intersection - g/t Au



An oblique view looking southwesterly and up to surface.



INFRASTRUCTURE – SOUTH VIEW





PROJECT DEVELOPMENT

UPCOMING DELIVERABLES 2012-2013

Solids Model

Geotechnical

Metallurgy

Maiden Resource Estimate

Scoping Level Studies

Process Design - Optimization Studies

Mine Design/Cost Est. - Scoping Level

Cash Flow Modeling

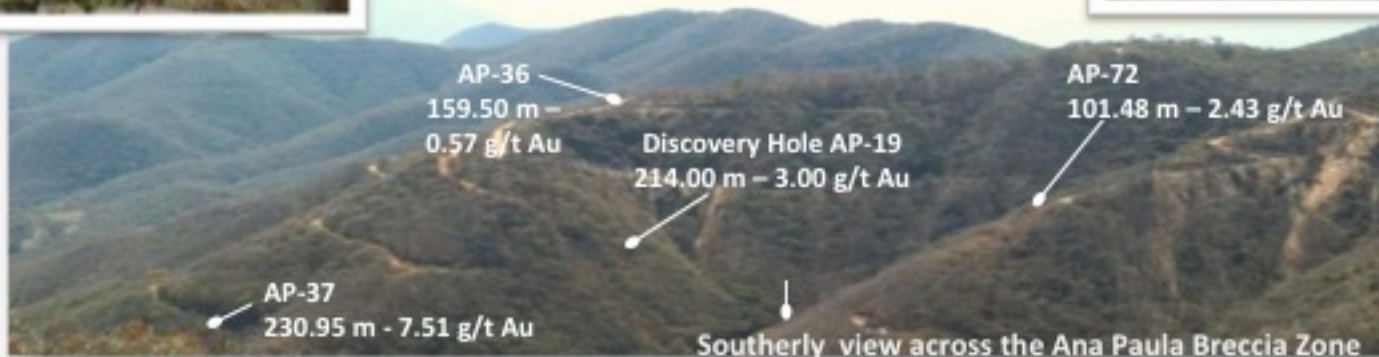
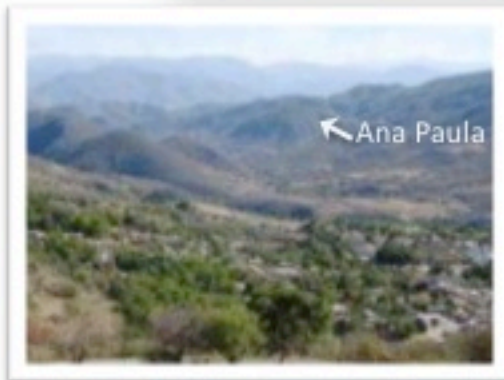
Updated 43-101 Technical Report





ANA PAULA PROJECT

CUETZALA DEL PROGRESO, GUERRERO





NEWSTRIKE
CAPITAL INC.

GOLD AND SILVER EXPLORATION IN MEXICO

Contact: Richard Whittall

Website: www.newstrikecapital.com

Phone: 604.605.4654